

Sona<sup>®</sup>

SitOnIt • Seating<sup>®</sup>

Big design. Slim profile.







## JORGE PENSI

Regarded as one of the world's leading furniture designers, Jorge Pensi is widely known for his fluid, elegant chair designs.

*"Sona is absolute comfort and pure aesthetic; non-invasive, lightweight, with the ability to last over time."*

Jorge designed Sona knowing a wide range of fabrics and the possibility to choose between various arms would allow the user to choose the option that best suits their personal taste.







TEXTILES: Textured Knit Black (back)  
Maharam Small Dot Pattern Red (seat)

## DELIGHTFULLY SURPRISING

With a slim, angular profile, this eye-catching conference and task chair boasts advanced performance and distinctive styling, with silver metallic upgrades. Sona® is perfect for a discerning executive or, with the pull handle option, a conference or board room.



## DESIGNED FOR PLEASURE

Style, ergonomics and supreme comfort are the hallmarks of the Pensi-designed Sona knit back chair. Or pair it with the equally comfortable Sona upholstered back for the executive suite. The Sona collection is completely customizable with three control and six arm choices for both task and executive use. Optional seat depth adjustment helps accommodate users of all sizes.



TEXTILES: Ultrafabrics Brisa Fresco Coconut





TEXTILES: Textured Knit Dune (back)  
Momentum Crossing Colors Peridot (seat)

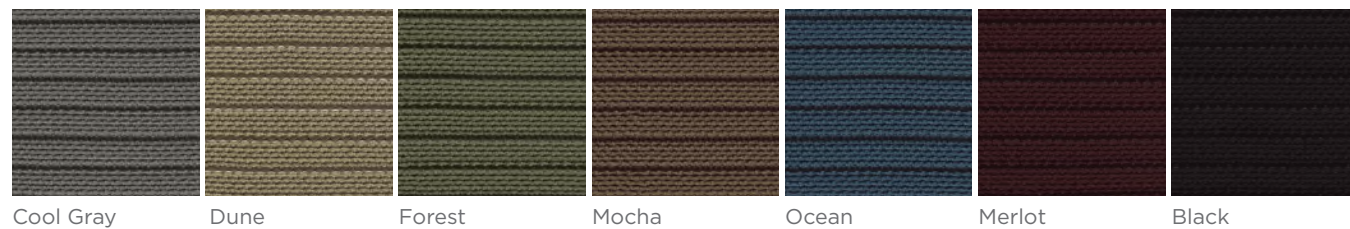
## COMMUNICATE, COLLABORATE AND COMPETE

The standard height-adjustable back provides optimal lumbar support while the knit or upholstered back offers unsurpassed comfort. This chair is completely customizable with a variety of control, arm and knit designs to help foster creativity, promote productivity and accelerate communication.





## Textured Knit



Cool Gray

Dune

Forest

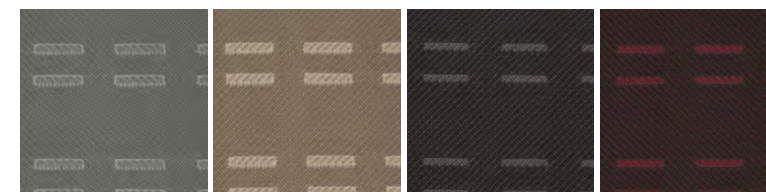
Mocha

Ocean

Merlot

Black

## Twin Knit



Winter Gray

Toffee

Shadow

Licorice

## Upholstered

Thousands of fabrics ship in 2, 5 or 10 days

## Options

### Arm



Black or Silver: Fixed Open Loop



Black or Silver: Fully Adjustable (6-way)



Black or Silver: Fully Multi-Adjustable (8-way)

### Base



Silver Metallic



Black

### Pull Handle



Silver Metallic



Black

### Mechanisms

- Swivel Tilt
- Knee Tilt
- Enhanced Synchro
- Enhanced Synchro with seat slider

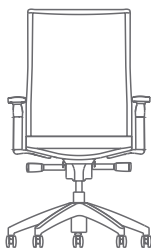


# Specifications

## MODEL: 5723 Midback

Overall Width	27
Overall Depth	23
Overall Height	37 - 43.5
Seat Width	19
Seat Depth	18
Seat Height	17.5 - 20.5
Back Width	19
Back Height	25
Weight Armless	46 lbs.
Weight with Arms	52 lbs.
COM (back style)	(knit) 0.75 yds. (upholstered) 1.75 yds.
COL (back style)	(knit) 10 sq. ft. (upholstered) 26 sq. ft.
Weight Capacity	300 lbs.

Dimensions are in inches.



## FEATURES

- Innovative ergonomics include the ability to adjust the arm pad depth and width while sitting
- Height-adjustable back provides customized lumbar support
- Multiple knits in 11 designer colors
- Soft and comfortable Jorge Pensi design
- Waterfall seat with molded foam cushion promotes proper leg circulation
- 300 pound weight capacity
- Lifetime Warranty on all structural components
- All options and thousands of fabrics ship in 2, 5 or 10 days

